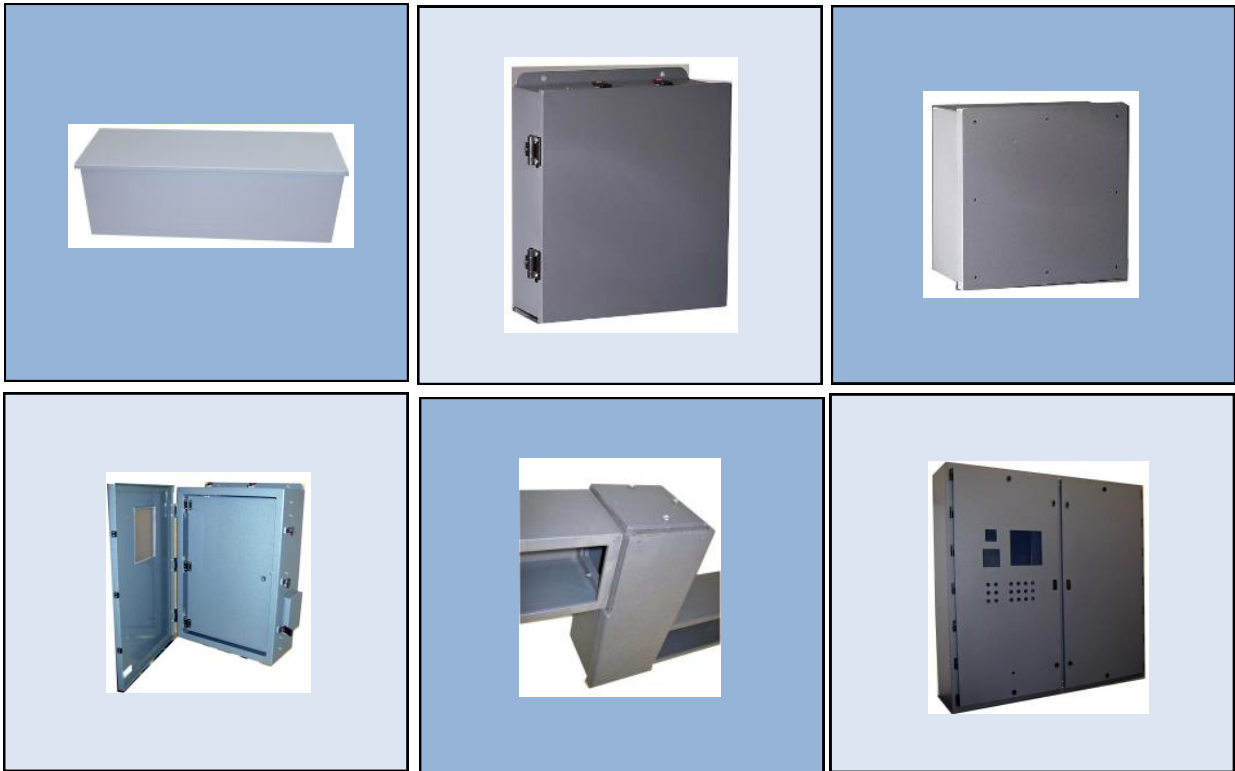




16744 WEST PARK CIRCLE DRIVE
CHAGRIN FALLS, OH. 44023
PH (440) 543-2393 FAX (440)543-2397
www.qubeinc.com

PVC Nema 4X Electrical Enclosures



STANDARD TERMS

VERBAL ORDERS ARE NOT ACCEPTED : Because of the number of sizes and details involved, we require that all orders be confirmed in writing prior to manufacture. This is typically done via FAX OR EMAIL

CREDIT TERMS Qube's terms are **2% 10 Net 30** Credit must be established prior to shipment, and prior to programming of custom and dimensionally changed product. We also accept **Master Card , Visa, and American Express**

FREIGHT CHARGES : are prepaid and added on most shipments. Customer specified carriers may be shipped collect.

UPS SHIPMENTS: Please be aware that Qube will ship certain sizes UPS based on customer request and cost. In many cases, UPS adds a **DIMENSIONAL WEIGHT** charge in excess of normal zone / weight costs. These costs are added to the shipment freight charges.

OVERNIGHT AIR: **All expedited shipments require a third party billing (such as customers UPS or Federal Express number)**. UPS has certain dimensional limits, FED EX will accept larger freight. For certain large enclosures, overnight air is not available. All expedited freight requires a written authorization from the customer.

FREIGHT DAMAGE : Unfortunately, freight damage is common in the shipment of enclosures. Qube makes every attempt to package it's products accordingly.. **PLEASE INSPECT FREIGHT PRIOR TO ACCEPTING** .If concealed damage occurs, please retain the damaged product, and notify Qube for instruction. Often a lid or other part can simply be replaced.

LEAD TIMES: **QUBE DOES NOT STOCK ANY PRODUCT**. Our manufacturing process allows dimensional changes and the ability to manufacture enclosure sizes not commonly available. Most HC,SC,and TR products ship within 5 *working* days or less. Large cabinets generally ship in 10-15 *working* days or less. CN computer enclosures generally ship in 5-7 working days. Most initial custom orders are shipped in 20 working days or less.

PRODUCT RETURNS : Custom and dimensionally changed products **may not** be returned. Standard products may be returned as in salable condition. and the return request is made within 30 days of product shipment. On multiple unit custom orders we recommend that 1 unit be produced prior to manufacturing the entire order. A 20% restocking charge applies to returns

COUNTRY OF ORIGIN : All Qube products are produced in Chagrin Falls OH, USA

LIMITED WARRANTY

Qube Corporation warrants product to be manufactured as specified, and free from defects in material and workmanship. No representation or other affirmation of facts, including but not limited to statements regarding capacity, suitability for use or performance, shall be deemed to be a warranty or representation of Qube Corporation for any purpose.

MADE IN THE USA





16744 WEST PARK CIRCLE DRIVE
CHAGRIN FALLS, OH. 44023
PH (440) 543-2393 FAX (440)543-2397
www.qubeinc.com
Email: steve@qubeinc.com



About us

Qube corporation manufacturers PVC enclosures that meet Nema 4X standards. In addition to typical sizes, we have manufactured hundreds of sizes and custom products. Our manufacturing process allows us to produce small quantities with quick turn around.

In addition to electrical enclosure products, our offerings have expanded over the years to include computer enclosures, printer enclosures, and various oem equipment housings.

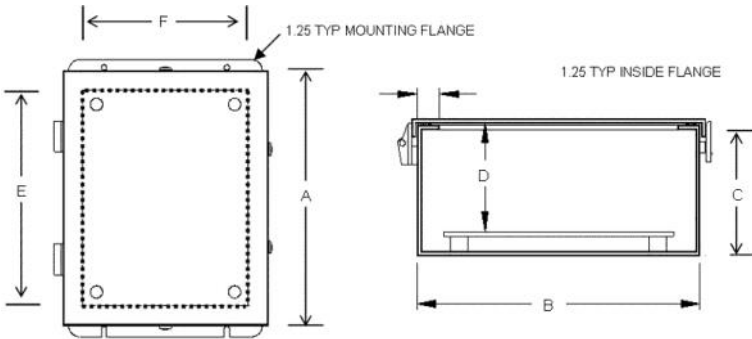
We are located in Chagrin Falls OH, an eastern suburb of Cleveland OH.

Our Advantage

We specialize in larger enclosures which while they may be available in other materials, are often not stocked. Our process allows for easy dimensional changes and customization. Typically, our products offer savings over available fiberglass, and substantial savings when compared to stainless steel. We also produce products such as trough and wireway that are difficult to find.

Nema 4X PVC Hinged Cover Enclosures	Page 2
Nema 4X PVC Screw Cover JUNCTION	Page 4
Nema 4X Screw Cover Trough	Page 5
Nema 4X Screw Cover Wireway	Page 6
Nema 4X Double Door Wall Mount	Page 7
Nema 4X Double Door Free Standing Cabinet	Page 8

HC PVC NEMA 4X HINGED COVER ENCLOSURES



TYPICAL SIZES

	CAT NUMBER	A	B	C	D	E	F
12	HC121006	12	11	6.50	6	10	9
	HC121206	12	11	6.50	6	10	11
18	HC181808	18	18	9.2	8	15	15
	HC181812	18	18	9.2	8	15	15
20	HC201606	20	16	7.20	6	17	13
	HC201608	20	16	9.20	8	17	13
	HC201610	20	16	11.20	10	17	13
	HC201612	20	16	13.20	12	17	13
	HC202006	20	20	7.20	6	17	17
	HC202008	20	20	9.20	8	17	17
24	HC241606	24	16	7.20	6	21	13
	HC241608	24	16	9.20	8	21	13
	HC242006	24	20	7.20	6	21	17
	HC242008	24	20	9.20	8	21	17
	HC242012	24	20	13.20	12	21	17
	HC242406	24	24	7.20	6	21	21
	HC242408	24	24	9.20	8	21	21
	HC242410	24	24	11.20	10	21	21
30	HC302008	30	20	9.20	8	27	17
	HC302408	30	24	9.20	8	27	21
	HC302412	30	24	13.20	12	27	21
	HC303008	30	30	9.20	8	27	27
	HC303010	30	30	11.20	10	27	27
	HC303012	30	30	13.20	12	27	27
36	HC362008	36	20	9.20	8	33	17
	HC362408	36	24	9.20	8	33	21
	HC362410	36	24	11.20	10	33	21
	HC362412	36	24	13.20	12	33	21
	HC363008	36	30	9.20	8	33	27
	HC363012	36	30	13.20	12	33	27
	HC363608	36	36	9.20	8	33	33
	HC363612	36	36	13.20	12	33	33
48	HC483612	48	36	13.20	12	45	33
60	HC603612	60	36	13.20	12	57	33
72	HC723612	72	36	13.20	20	69	33



Qube Hinge covers provide 4X protection. PVC is standard, ABS, and UV stabilized HDPE are optional materials.

All Qube Hinge covers include a plastic (same material as enclosure) back panel and integral mounting flanges.

Available options include 4X welded in windows, swing out panels, Key Locks, or stainless steel pad lockable latch.

All HC's can be customized with holes and cutouts. Examples of what is available on HC options page

This item can be customized to specific dimensions. **Max dimensions : 72" H X 48" W X 24" Deep**



Standard acetal hinge with Lexan™ hinge

Standard nylon



Available Stainless palockable latch

Available Keyed Lock

In addition to dimensional changes, Qube hinged cover Nema 4x enclosures can be customized in many ways.

- | | |
|---|---|
| <ul style="list-style-type: none"> • Material Options such as white UV resistant HDPE, Black ABS, PVC type II, and specialty • materials such as green UV stabilized HDPE. • Swing out panels, solid and • customized with specific cutouts. • Cutouts in the back or bottom to cover existing enclosures. | <ul style="list-style-type: none"> • Several different vent options • Rain hoods • Locks • Hardware options such as stainless steel latches, lift and turn latches, tool operated latches • Custom welded in 4X windows • Wall mount support brackets for deep enclosures |
|---|---|



INSTRUMENT CASES



HARWARE OPTIONS



RAINHOODS



HOLES AND CUT OUTS



CUSTOM CONFIGURATIONS



CUSTOM SW PANELS



CUSTOM MATERIALS



DOCK ENCLOSURES



VENT OPTIONS



SWINGOUT PANELS



DOOR DESIGN OPTIONS



WALL MOUNT OPTIONS

SC PVC NEMA 4X SCREW COVER JUNCTION BOXES

	Catalog Number
	A B C
12	SC121208
	SC121212
14	SC141406
	SC141406
16	SC161206
	SC161608
18	SC181806
	SC181808
	SC181810
	SC181812
20	SC201604
	SC201606
	SC201608
	SC202010
	SC202012
24	SC241806
	SC241808
	SC2418012
	SC242406
	SC242408
	SC242410
30	SC302008
	SC303008
	SC303010
	SC303012
36	SC363608
	SC363612
48	SC484812

Qube PVC Nema 4X screw cover junction boxes are manufactured using 1/4" thick rigid PVC with welded construction.

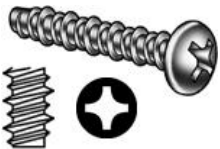
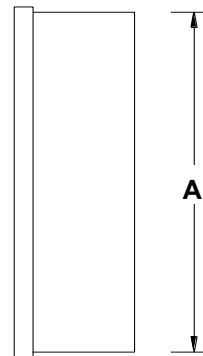
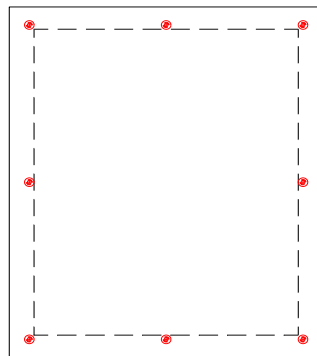
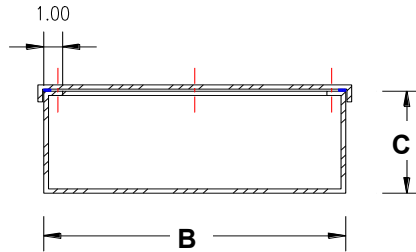
Sizes listed are typical, the manufacturing process allows any size in qty's of 1 unit within maximum dimensions

Max dimensions :
48" X 48" X 36" D.



NOTE:

Product is not traffic rated, and not recommended for direct underground burial.



STAINLESS STEEL SELF TAPPING PLASTIC SCREWS ARE STANDARD.



CLEAR COVER



POLE MOUNT



CUSTOM

Examples of available options



Qube Nema 4X Trough is manufactured with rigid 1/4" PVC and has all welded construction

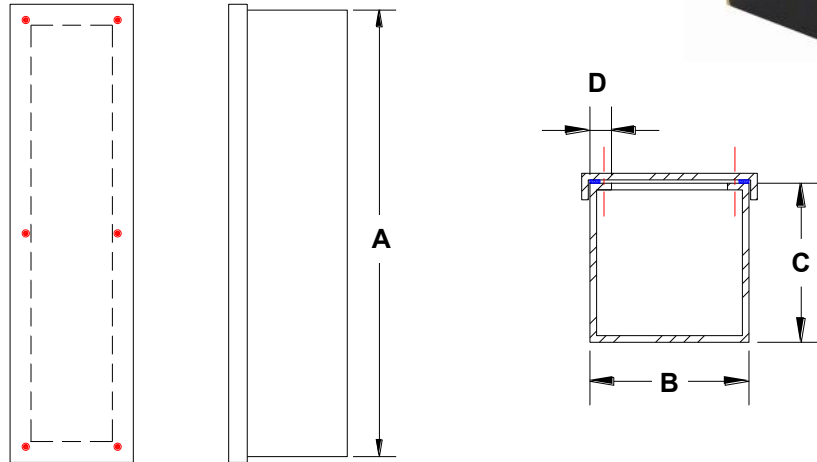
Trough can be ordered in custom sizes and lengths, including where the depth is different from the width.

In quantities of less than 5, 72" is the longest made. In larger quantities, the maximum length is 96".

For longer product, see QW wireway which can be bolted together.

NOTE:

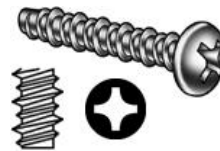
Product is not traffic rated, and not recommended for direct underground burial.



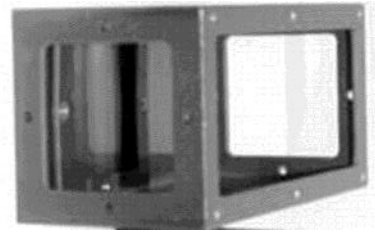
TROUGH , TYPICAL SIZES

Catalog Number		A	B	C	D
6 x 6	TR060612	12	6	6	0.75
	TR060618	18	6	6	0.75
	TR060624	24	6	6	0.75
	TR060636	36	6	6	0.75
	TR060648	48	6	6	0.75
	TR060660	60	6	6	0.75
	TR060672	72	6	6	0.75
8 x 8	TR080812	12	8	8	0.75
	TR080818	18	8	8	0.75
	TR080824	24	8	8	0.75
	TR080836	36	8	8	0.75
	TR080848	48	8	8	0.75
	TR080860	60	8	8	0.75
	TR080872	72	8	8	0.75

Catalog Number		A	B	C	D
12 x 12	TR121218	18	12	12	1.00
	TR121224	24	12	12	1.00
	TR121236	36	12	12	1.00
	TR121248	48	12	12	1.00
	TR121260	60	12	12	1.00
	TR121272	72	12	12	1.00



STAINLESS STEEL SELF TAPPING PLASTIC SCREWS



Catalog Number	A	B	C	D	E
QW060612	6	6	12	4	4
QW060618	6	6	18	4	4
QW060624	6	6	24	4	4
QW060636	6	6	36	4	4
QW060648	6	6	48	4	4
QW060660	6	6	60	4	4
QW060672	6	6	72	4	4
QW060696	6	6	96	4	4
QW080812	8	8	12	6	6
QW080818	8	8	18	6	6
QW080824	8	8	24	6	6
QW080836	8	8	36	6	6
QW080848	8	8	48	6	6
QW080860	8	8	60	6	6
QW080872	8	8	72	6	6
QW080896	8	8	96	6	6
QW121218	12	12	18	10	10
QW121224	12	12	24	10	10
QW121236	12	12	36	10	10
QW121248	12	12	48	10	10
QW121260	12	12	60	10	10
QW121272	12	12	72	10	10
QW121296	12	12	96	10	10
QW906	6	6	6	4	4
QW908	8	8	8	6	6
QW9012	12	12	12	10	10
QW4506	6	6	6	4	4
QW4508	8	8	8	6	6
QW4512	12	12	12	10	10
QWCP04	4	4			
QWCP06	6	6			
QWCP08	8	8			
QWCP012	12	12			

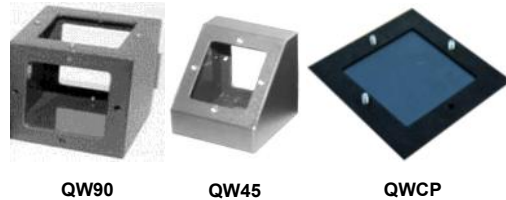
Qube Nema 4X PVC pull thru wireway is manufactured for wash down applications where protection against moisture and corrosion is required. The product offers significant savings when compared to stainless steel.

Sections are designed to bolt together with gasket and stainless hardware.

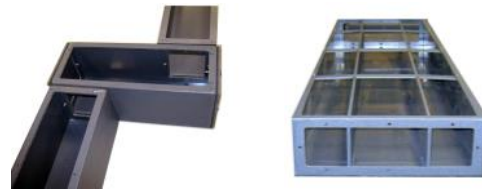
Note: The design is an internal flange so pull thru is 2" less than OD.

Custom Wireway with dividers:

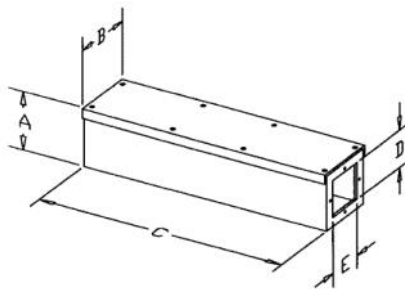
Custom product is available with modified dimensions and internal dividers.



QW90 QW45 QWCP



CUSTOM DIVIDERS



SECTIONS THAT NEED TO VARY FROM STANDARD LENGTHS

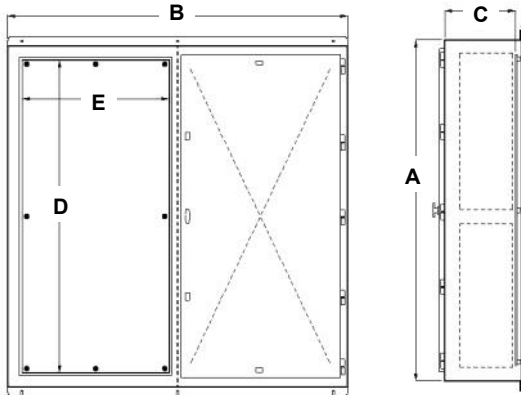
QUBE PVC WIREWAY IS MANUFACTURED TO BE 4X GASKETED INSTALLATION. **THE SECTIONS CANNOT BE CUT TO LENGTH IN THE FIELD.** QUBE CAN MANUFACTURE SECTIONS TO A SPECIFIC LENGTH THAT IS LESS THAN

Qube Nema 4X PVC large wall mount cabinets come standard with two PVC backpanels. The backpanel mounting studs are positioned to accept Hoffman industry standard steel panels.

PVC offers excellent corrosion resistance and weather ability. Substantion savings when compared to stainless steel.

All DDW cabinets have a welded in, non removable center support.

Standard Hardware: All DDW cabinets come with Black nylon bullet style lift off hinges, locking lift and turn locking compression handles, and Hex key compression locks.



Catalog Part Number	A	B	C	D	E
DDW304810	33.00	52.00	10.00	27.00	21.00
DDW364812	39.00	52.00	12.00	33.00	21.00
DDW366012	39.00	64.00	12.00	33.00	27.00
DDW484812	51.00	52.00	12.00	45.00	21.00

WE DO NOT OFFER 3 POINT LATCHING SYSTEM

AVAILABLE SIZES AND CUSTOMIZATION OPTIONS :

- CUSTOM DIMENSIONS Maximum Height is 48" ,Maximum Width is 72" , Maximum Depth 16"
- HOLES & CUT OUTS
- FULL CLEAR LEXAN DOORS
- SIDE PANELS
- FANS

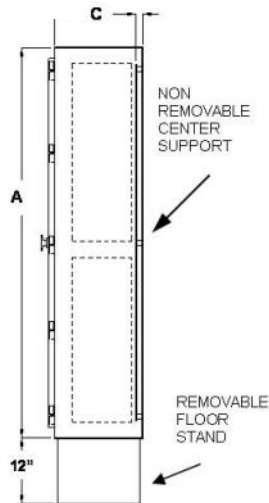
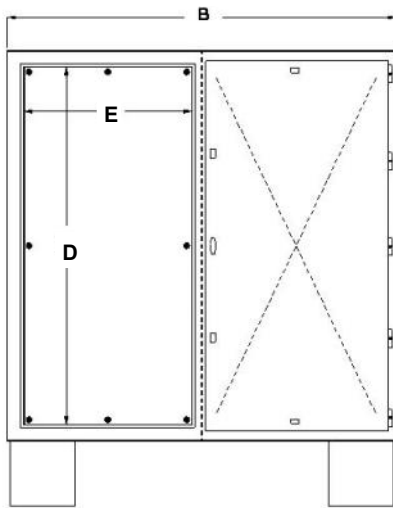
DDF LARGE PVC NEMA 4X DOUBLE DOOR FREESTANDING CABINET

Qube DDF are large PVC free standing cabinets that are designed with TWO backpanels. PVC offers excellent corrosion resistance and provides substantial savings over stainless steel. All cabinets come standard with two plastic backpanels. The backpanel mounting studs are positioned to accept Hoffman industry standard steel panels.

Dimensional changes are available. Other options include clear polycarbonate doors, welded in windows, and customer specific holes and cutouts



WE DO NOT OFFER 3 POINT LATCHING SYSTEM



Custom holes and cutouts



OPTIONAL Clear Polycarbonate Doors



Non-Removable internal Gusset

Catalog Part Number	A	B	C	D	E
DDF484812	51.00	52.00	12.00	45.00	21.00
DDF606012	63.00	64.00	12.00	57.00	27.00
DDF727212	75.00	76.00	11.00	69.00	33.00
DDF604824	63.00	52.00	24.00	57.00	21.00
DDF606024	63.00	64.00	24.00	57.00	27.00
DDF727224	75.00	76.00	23.00	69.00	33.00